



# Philadelphia Meet

ALL PHOTOS BY DAVE GAIRO

Dear Vane:

Enclosed are the official pictures of the Philadelphia Area Trolleyman's Meet held in Huntingdon Valley and at Holland, Pa., in May, 1975. Meet was sponsored by the E. Penn Traction Club of the Philadelphia Area.

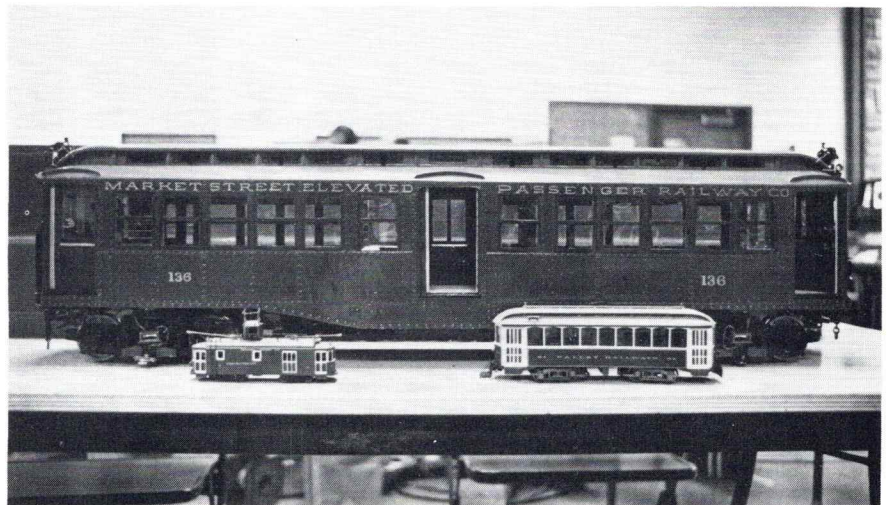
By all standards, it was a very successful Meet. Registrations exceeded 150 and most everyone seems to have had an exceptionally good time.

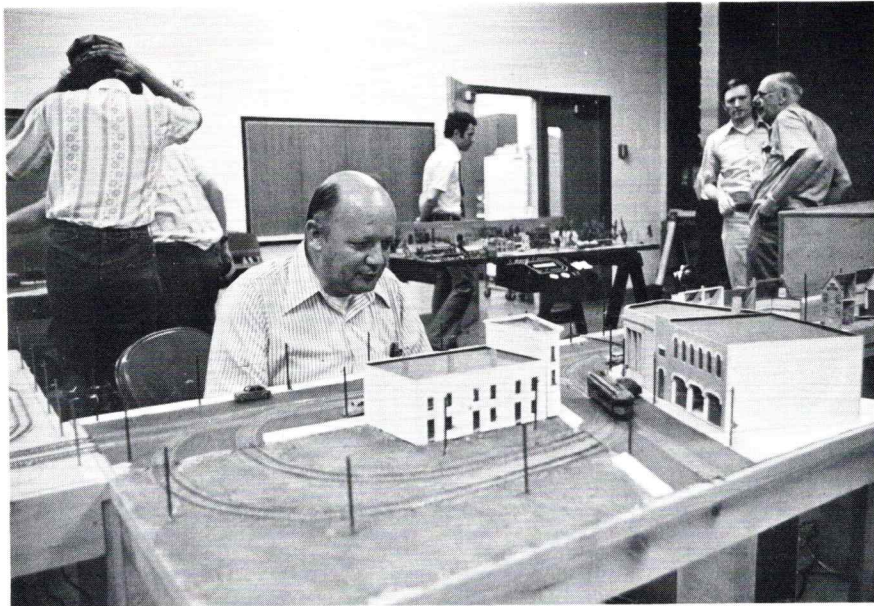
When we conduct a Trolleyman's Meet, there are certain purposes and objectives. Besides getting people together who have a common interest, we also try to develop an action-packed program. As a result, we had three very excellent live clinics presided over by experts in the field. Bill Kachel gave his excellent clinic on overhead wire construction. Bill Robbins demonstrated salvaging of tin plate from cans and then mass-producing some mighty fine looking cars from this raw material.

On Sunday, Blair Foulds held forth in Traction Hall (the garage), at the Holland headquarters of the Philadelphia and Reading Traction Co. The subject involved the essentials

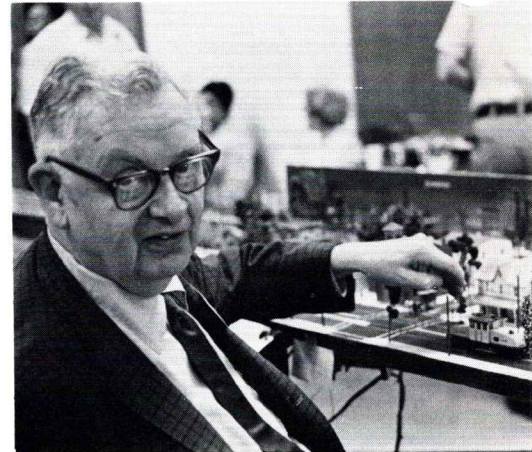
Bert Holmes, Jr., setting up the contest table. Besides Jim Sparkman's  $\frac{3}{4}$ " scale model, another first was established. Four  $\frac{1}{2}$ " scale cars were entered, all built by different modellers. HO Modular layout in background.

Contest Winners: HO and smaller: Ed Torpey' HO model of Hershey Transit Line Car 3. O and 17/64" Scale: Chic Siebert's Valley Railways. Larger than 17/64" scale: Jim Sparkman's  $\frac{3}{4}$ " scale Market Street Elevated car No. 136.





HO enthusiast Dave Grier probably trying to determine whether it is dirt on the track or the power is off. Part of the HO modular.



Blair Foulds and his first unit to operate successfully under overhead wire (1934) with a trolley pole in HO gauge. A real pioneer.

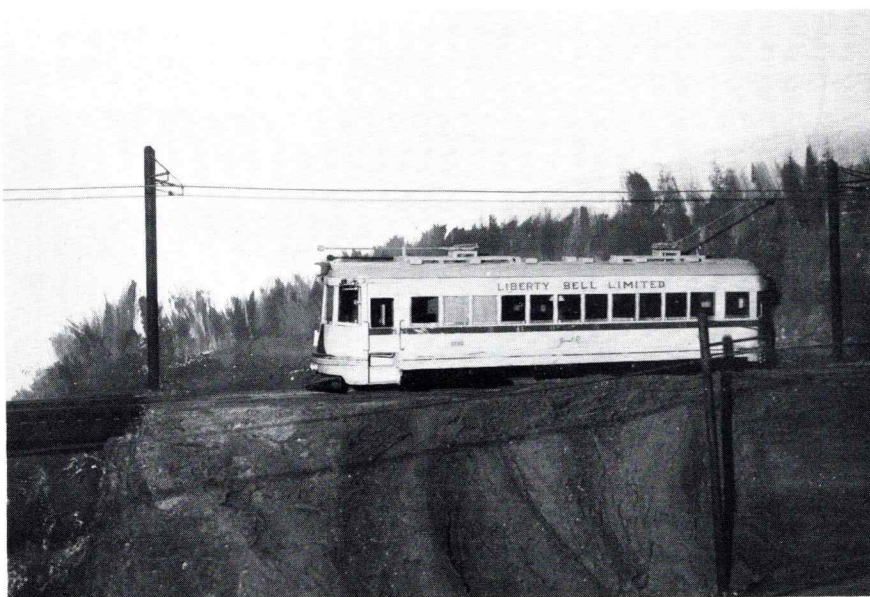


of a well designed traction layout and critiques of existing layouts. All clinics were well attended and well received. We had several automatic slide projection clinics engineered by Dave Gairo and Ed Torpey covering construction of a single point street switch and the construction of typical types of paving.

A "white elephant" sale was set up also where a person priced his article and bargained directly, if needed, with an interested purchaser. Saves much time and haggling compared to an auction.

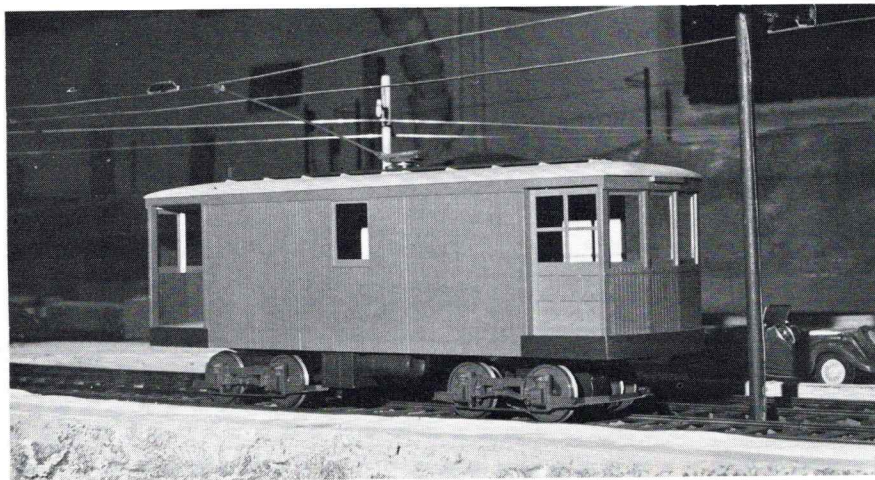
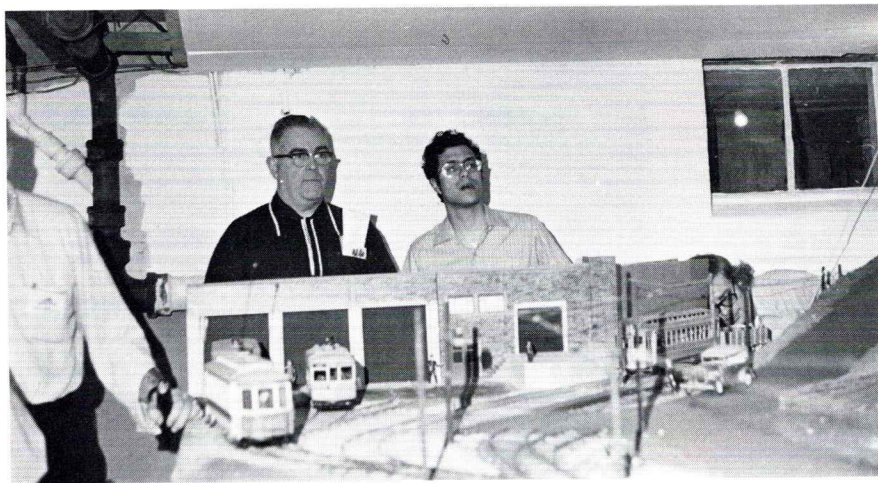
The contest is based on the winner capturing a majority of the popular vote. Each registrant is given a ballot and, to be eligible for the door prize, must register a vote in each class. In this manner, we assure a good voting number and a representative sampling of opinions about the models. This is a good way, we feel, to remove any charges of biased judges as the distant visitors far outnumber the club members.

Saturday night, a two hour presentation of excellent 16 mm. movies by Henry Elsner capped the day and the closing of the first part of the Meet.



Herb Kephart's Brill semi-convertible operating on the 1/2" scale Philadelphia & Reading Interurban Division trackage of Jim Richards.

Liberty Bell 1030 on the PRT interurban line also. Car is owned and was built in 1943 by Jim Richards, chairman of the meet.



Overall view of the O Scale Modular layout, and Jimmy Sparkman's  $\frac{3}{4}$ " scale 25' double track elevated module.

Looks like Bert Holmes and Chuck Long are trying to figure out which car is lost in what tunnel.

Lou Rakus'  $\frac{1}{2}$ " scale model of Philadelphia Rapid Transit Company's G-3 waiting on the turnout, until a revenue car clears the North Penn line.

The Sunday operation over the Philadelphia and Reading Traction lines involved three visiting  $\frac{1}{2}$ " scale cars that ran compatibly with the PRT cars. Herb Kephart's Brill car snubbed its fender on a sharp turn on the No. Penn loop, thus the emergency taping of the fender as shown in the pix. A total of 17 operating  $\frac{1}{2}$ " scale units were available with approximately six in use at any one time. The Philly Nearside built by the writer made its debut with dutifully operating doors opening and closing at each carstop, automatically.



The Sunday buffet was a success, too, thanks to the wives of club members. No one went away hungry as far as we know.

All in all, we had a lot of fun and we're sure our registrants did also. Have to admit we're glad it's over and we've got a chance to relax until the next one!

Sincerely,  
Jim Richards  
76 Heron Road  
Holland, Pa. 18966

Jimmy Sparkman making some adjustments on his prize-winning elevated car, while running on the  $\frac{3}{4}$ " scale elevated module. He almost became the first man to be run down by his own model!

Everitt F. Wood, former NMRA Traction Committee Chairman in a rare view---spending some money.

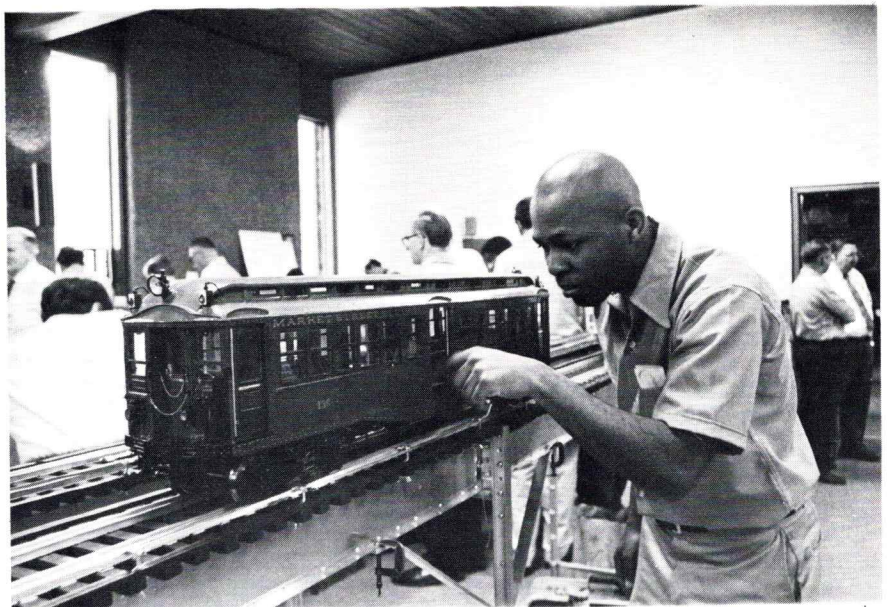
Having organized the meet and delegated all the work to others, the Chairman can talk to the ladies while George VanDeventer, Fred Weigle and Dave Cope work(!?)

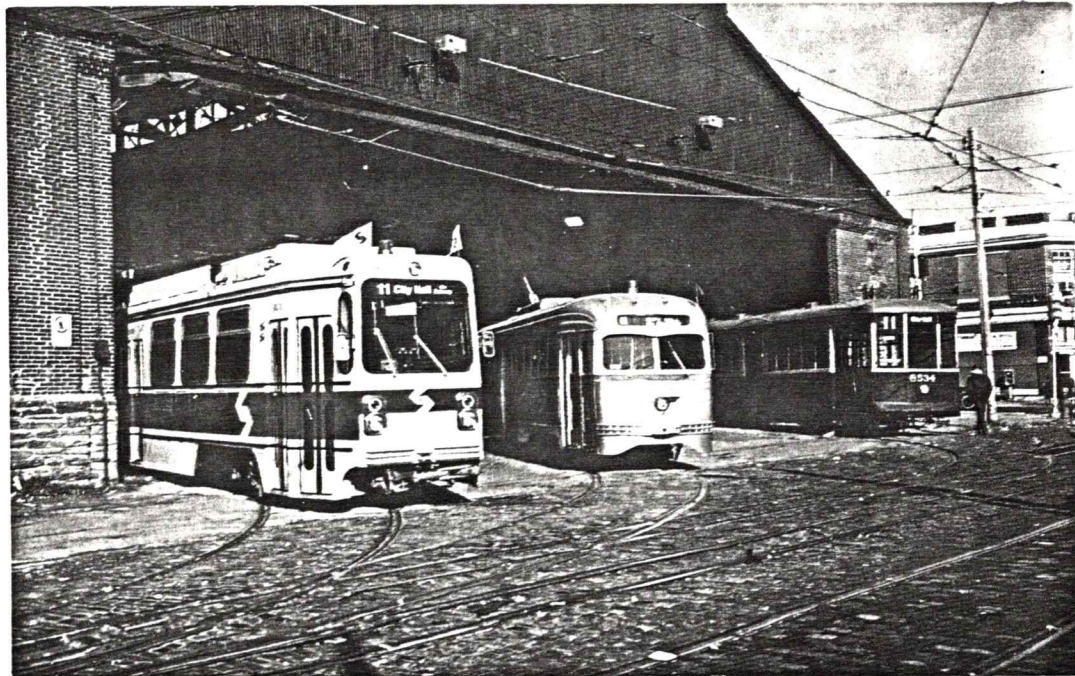
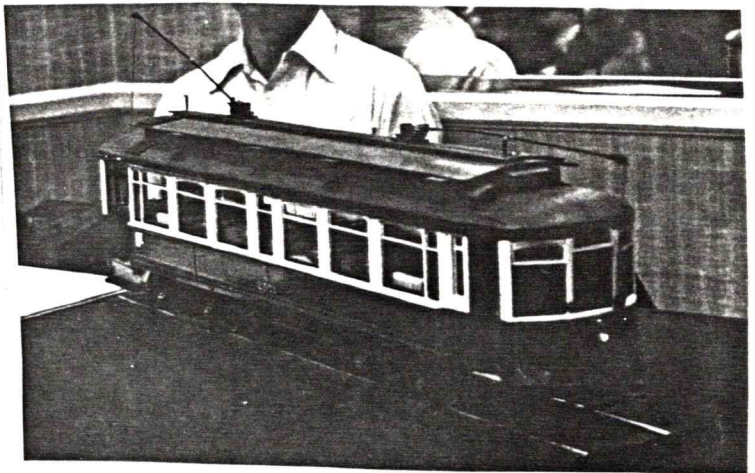
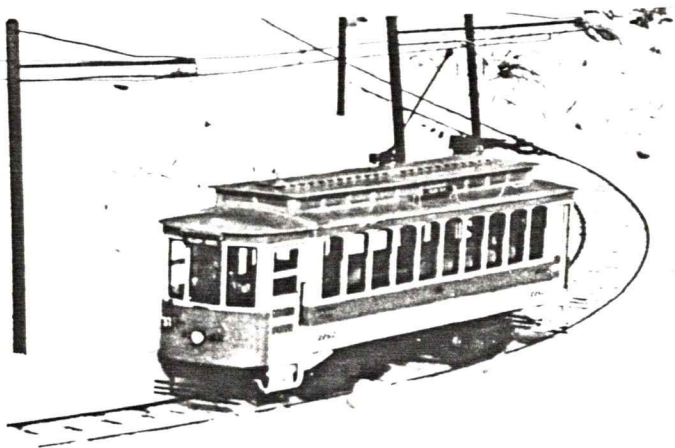
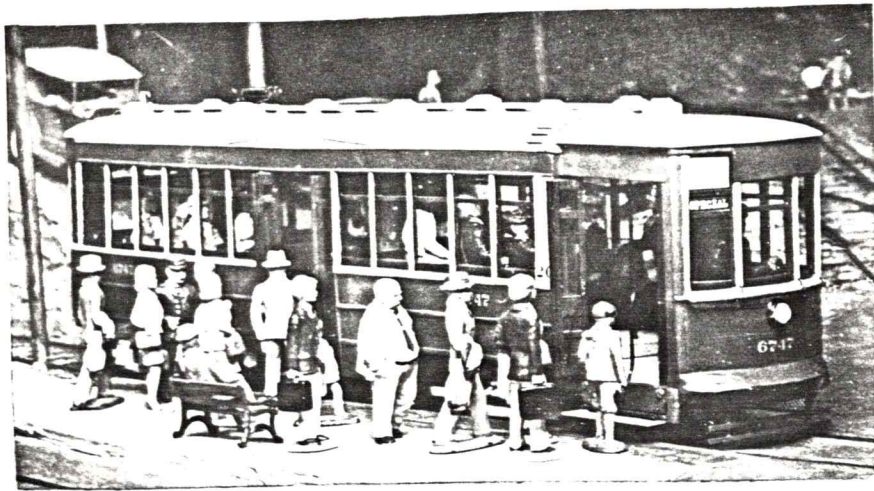
#### OPPOSITE PAGE:

The commercial area was quite busy, most of the time.

Bert Holmes, jr., discussing and demonstrating rubber mold-epoxy casting techniques, the subject of the poster-board clinic shown in the background. One of over half a dozen such static and operating instructional displays.

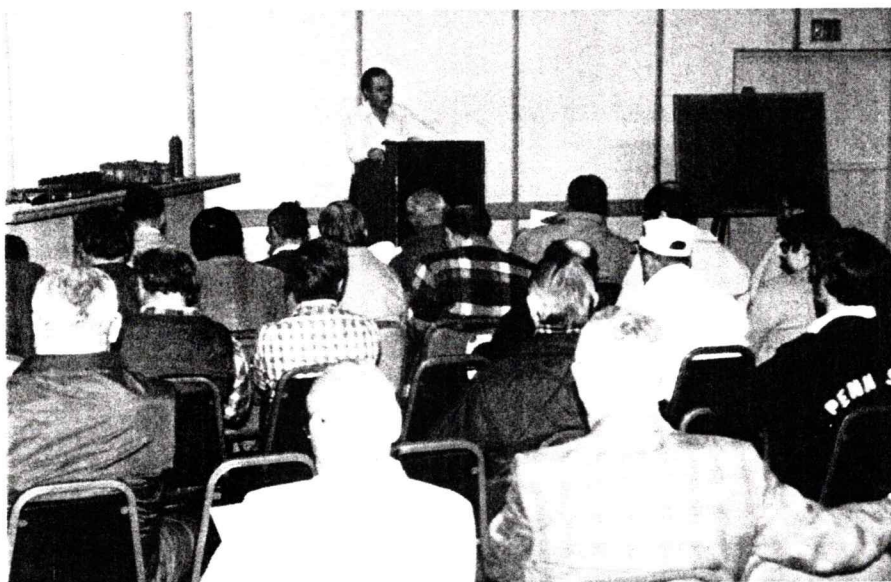
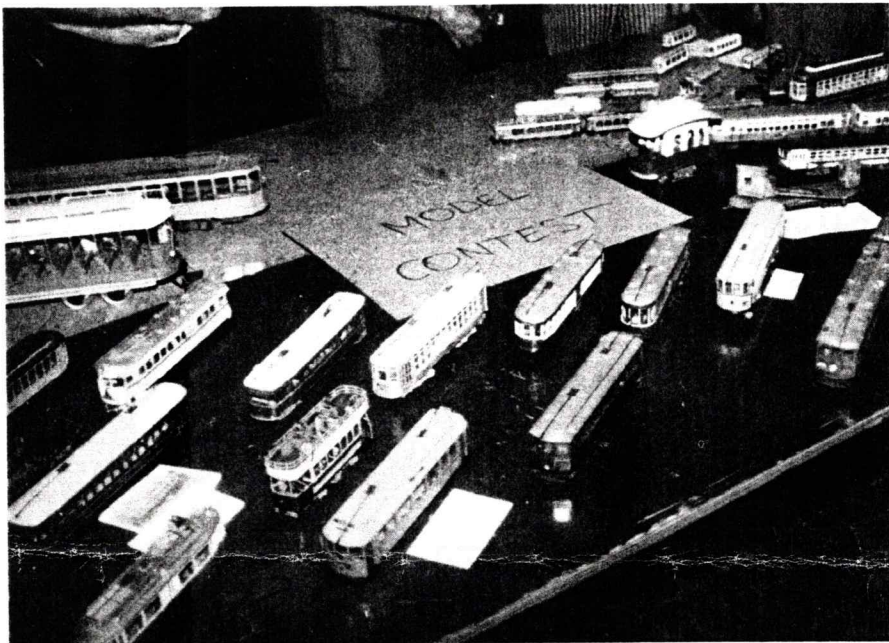
David Waddington, one of the more famous traction fans, inspecting the special work on one of the O scale modules.



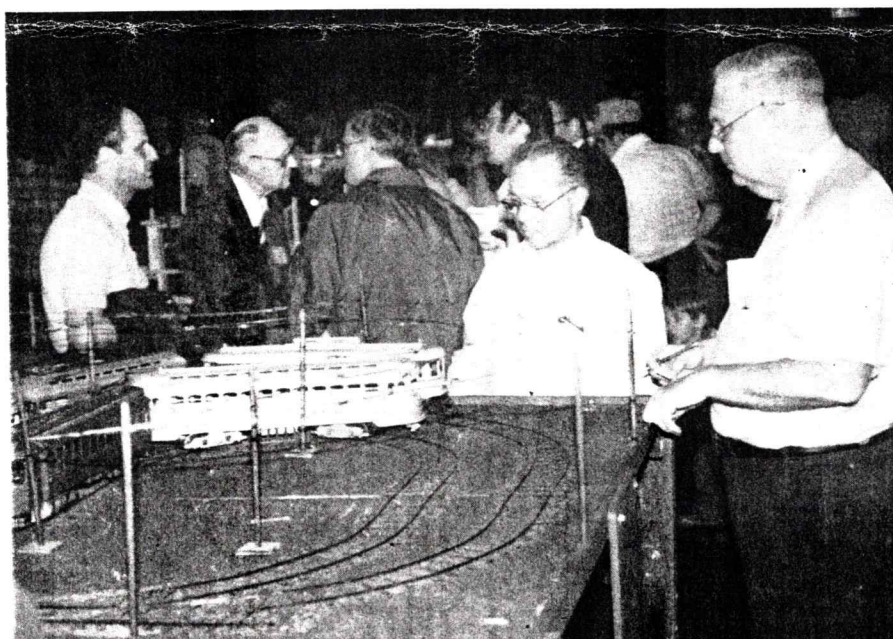


RUN #188  
JUNE 1981

Just a few of the cars  
entered in the Model Contest.



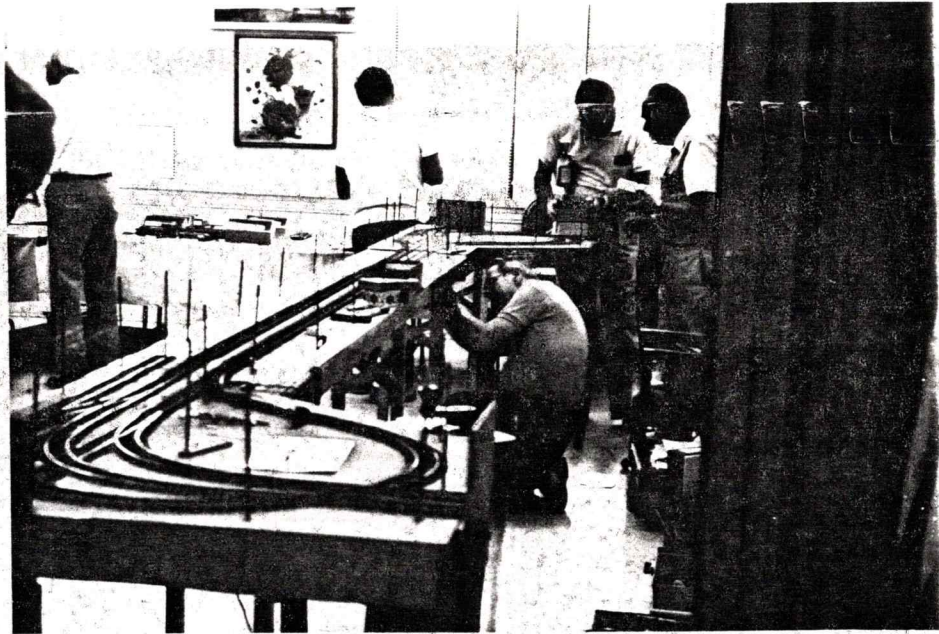
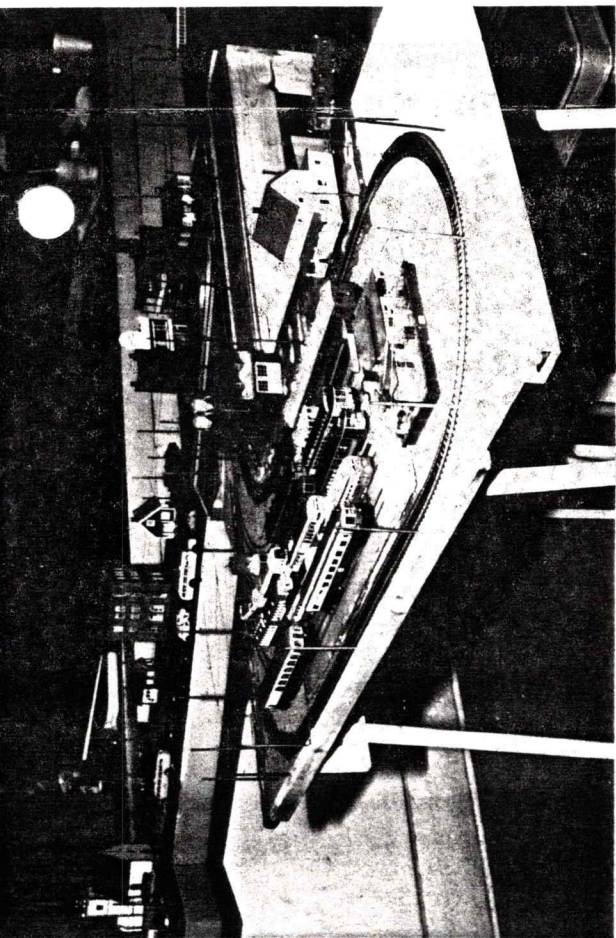
Trolley construction and  
kit-bashing clinic by Dave Gairo.



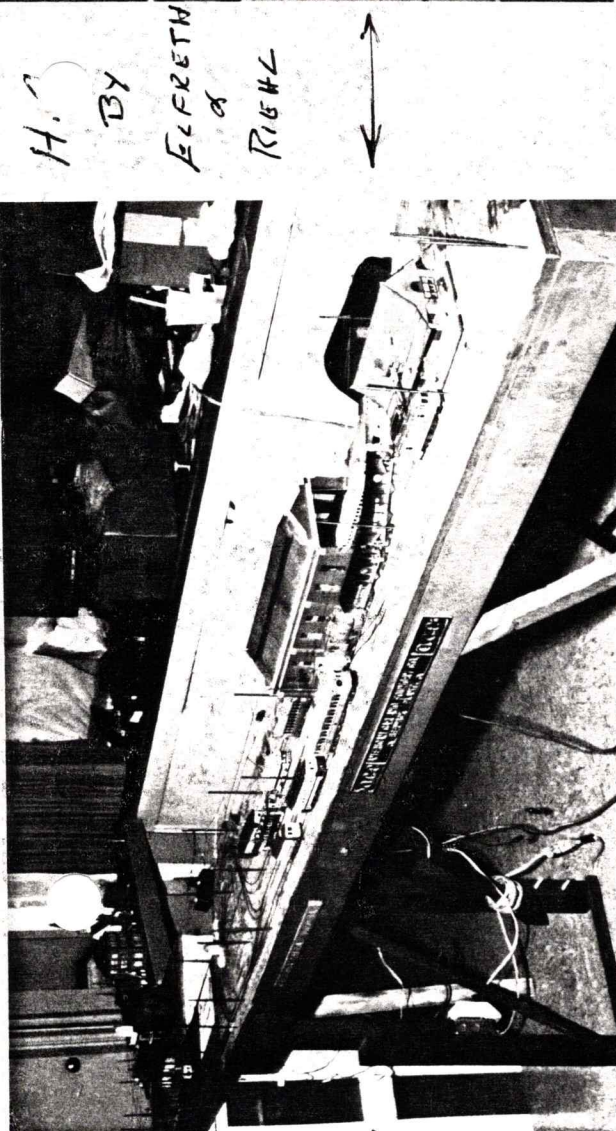
"Mr O Scale" (Rich Wag-  
ner) is clearly shown in the  
background, as Jim Richards  
and Bill Olsen ponder a prob-  
lem on the 1/2" layout.

All Black & White Photos by  
Herb Mack.

MORE PHOTOS ON PAGES  
16-17 and 20-21



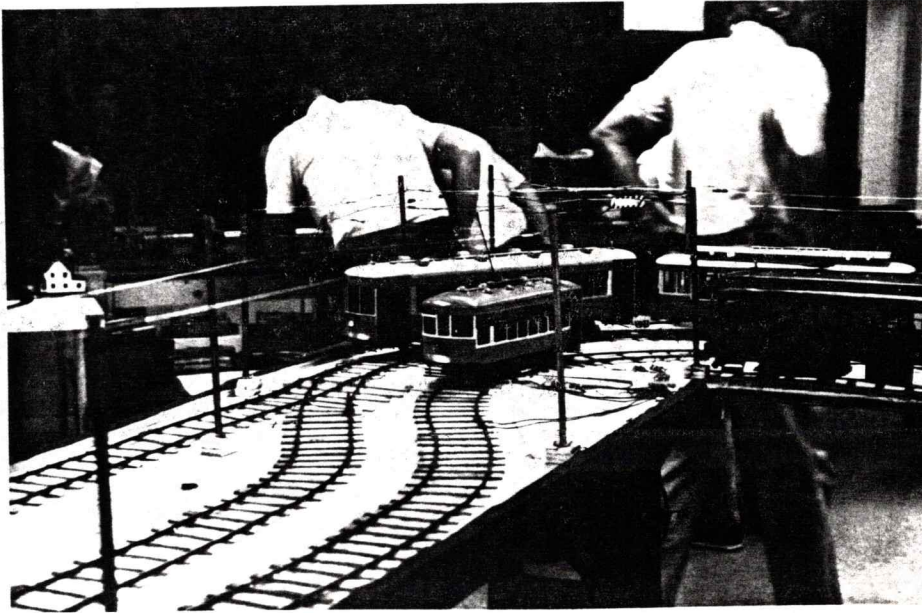
"0" SCALE BY WEIGLE & HUSSEY. O'TOOLE'S MERCHANDISE DISPLAY IN BACKGROUND



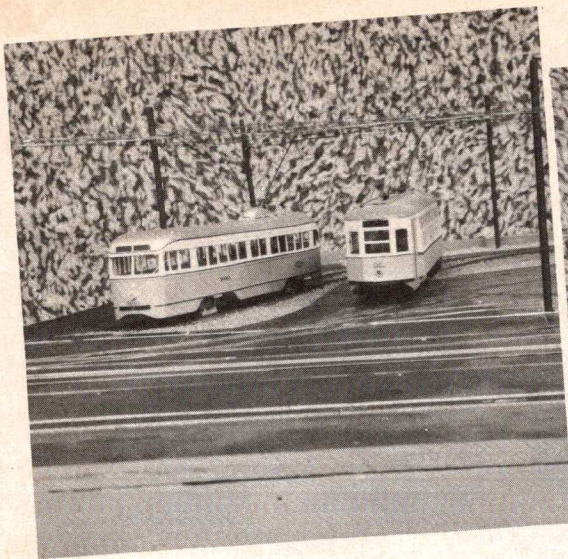
H. BY FLETCHER & RIEHL



↑ THE INDOMITABLE ↑ BUD NUSSEY  
 (0" SCALE)  
 [BILL HOFFMAN - - - NEW 1/2" SCALE PORTABLE]

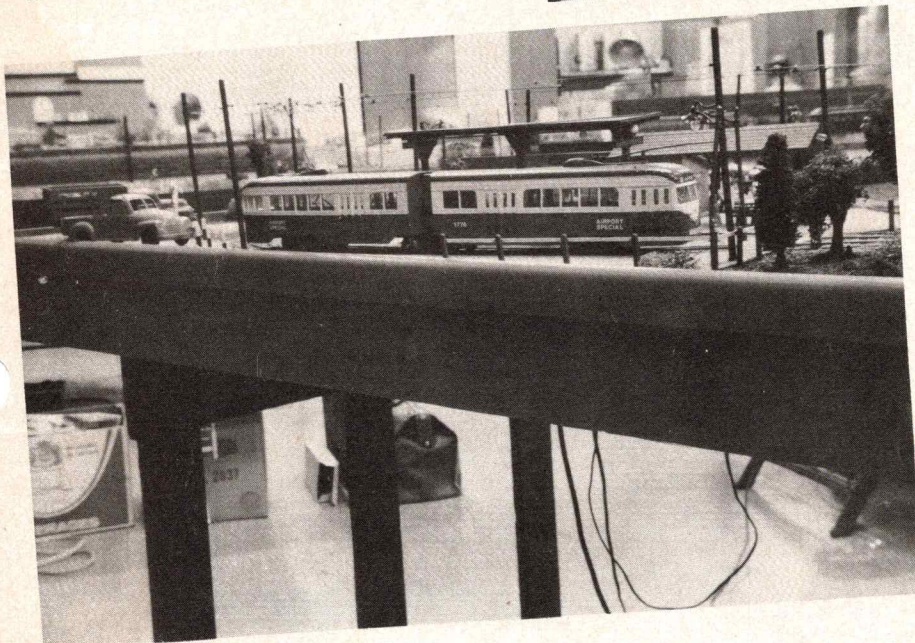






**MORE PHILLY PHOTOS**

All Photos by W.D. Volmer.



TOP, LEFT: Boston Elevated cars owned by Bill Volkmer shown at Philadelphia trolley meet.

TOP, RIGHT: Philly cars at the Philly trolley meet, Huntington Valley, Pa., May 24, 1975.

LEFT: Articulated PCC "Airport Special".

BELOW: PTC Brilliner crosses John Derr's viaduct.

All Cars Shown are O Scale.

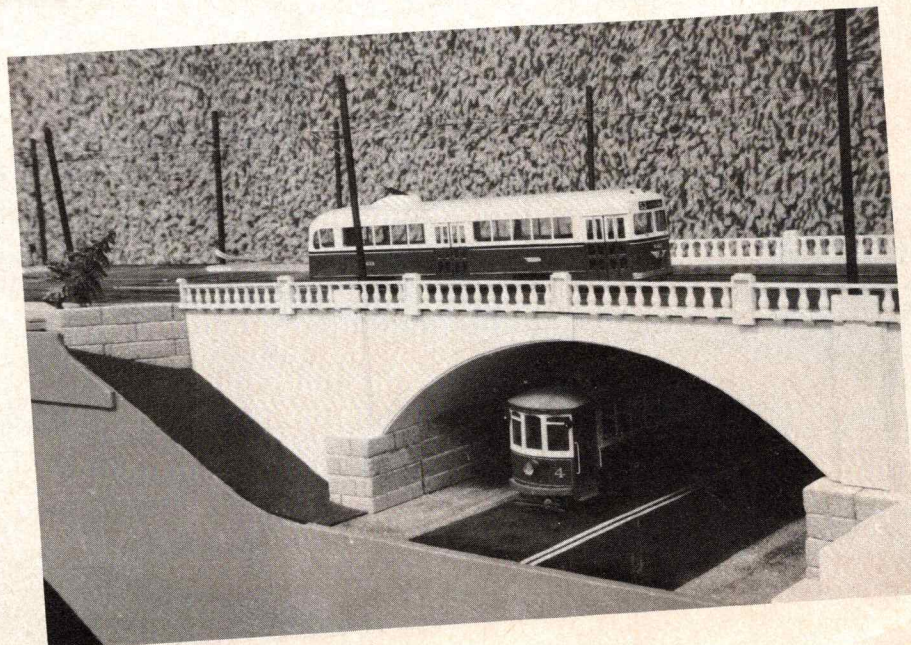
**BAY STATE MODELS**

**O Scale  
BOSTON ELEVATED  
RAILWAY**

Center Entrance Motor Car  
Assembled Body  
Cast Epoxy  
\$55.00

**BAY STATE MODELS**

8 Rollins Street  
Groveland, Mass. 01834



*TOM*

SEPTEMBER, 1975

